



LEAF

2020 ANNUAL REPORT



LOCAL
ECOLOGY
AGRICULTURE
FREMONT

FREMONTLEAF.ORG



LOCAL ECOLOGY AND AGRICULTURE FREMONT

2020 ANNUAL REPORT

Dear LEAF Friends,

As I reflect on the past year, I am filled with gratitude. In a time of turmoil and pandemic restrictions, I remain in awe over the dedication our volunteers, staff and donors collectively poured into LEAF over the course of 2020. Together, we made an enormous impact on each other and on the lives of thousands of individuals within our community. And we feel as if we are just getting started!

As we begin this new year, we resolve to remain committed to prioritizing food security, providing fresh produce to the local food banks and holding virtual space for environmental education and the promotion of healthy lifestyles. Our commitment to these goals drives us to overcome whatever obstacles present themselves. COVID was the catalyst behind the migration of our onsite seedling sale to an online contactless system. The pandemic reminded us of our ability to harness the power of community through technology. We are thrilled to share that LEAF is collaborating with bright minds across the country to launch new technology initiatives that will bring our members together with opportunities to enhance our sustainable gardening skills and practices like never before.

It has been said that the most powerful action we can take is to secure a measure of responsibility for ourselves, our local environment and our own food supply. As we look into 2021 and beyond, we are planning to deepen our commitment to mitigate climate change, thereby helping to make Fremont one of the greenest cities in the country. May we all find the wisdom and empathy we need as we write the next chapter of LEAF together.

With gratitude and a smile,

Elaine
LEAF President

2020 HIGHLIGHTS

The following represent strides and accomplishments that were achieved by LEAF during the 2020 calendar year.

- Bee Sanctuary, our newest food garden, went into production in spring and along with Stone Garden contributed 5000 pounds of fresh, healthy produce to two local food banks.
- The Spring Seedling Sale moved from onsite sales to an online contactless system due to COVID. It provided over 3500 seedlings plus our fresh local honey which sold out really fast.
- We held our first Winter Seedling Sale via a web-based, contactless system, offering over 1400 seedlings and 42 pints of honey.
- We started producing and uploading educational videos to YouTube.
- We began offering our “Talkin' Dirt” educational series of webinars in October in collaboration with volunteers from the Alameda County Master Gardeners.
- The hiring of a new marketing manager allowed us to increase outreach through marketing videos and social media presence.
- Our funding from grants increased with the hiring of a new grant writer; it provided more than half our income last year.

PARTNER ORGANIZATIONS

Many thanks to our members, friends, volunteers, and partners whose support we could not have done without! We look forward to reconnecting with many of these wonderful organizations in the days and weeks to come.



LOCAL
ECOLOGY
AGRICULTURE
FREMONT
FREMONTLEAF.ORG

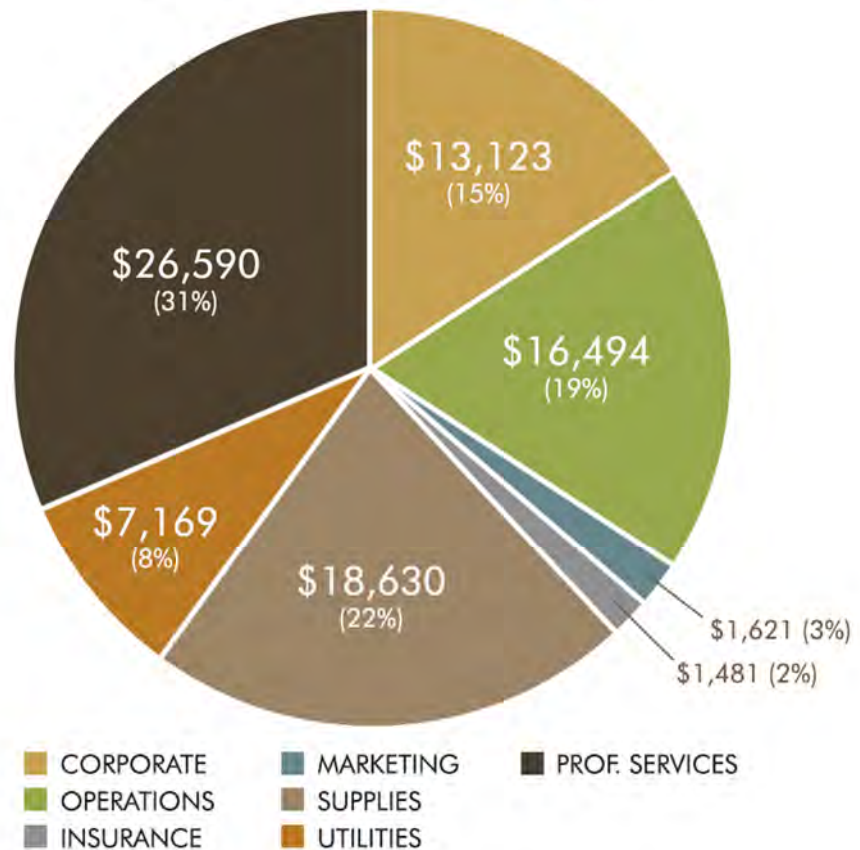
The go-to educational center for regenerative agriculture practices and sustainable living for the community.

FINANCIAL REPORT

As LEAF continues to expand, we are required to invest in upgrades to our facilities and various capital projects. A significant effort was made in 2020 to prepare for two major projects to be implemented in 2021, both of which are major enhancements to LEAF and the services we provide. One is the development of the Urban Garden, and the other is the much-anticipated move of the LEAF Center to a prominent area within the newly renovated California Nursery Historical Park in the town of Niles.

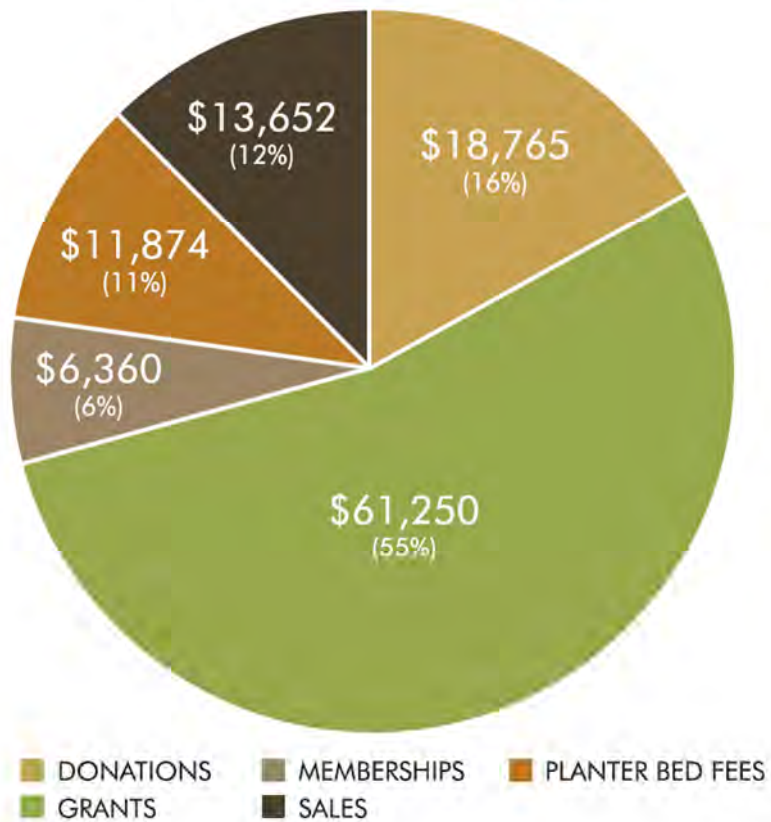
In 2020, a significant portion of our expenses went toward professional services, including landscape architects who designed the layouts and schematics for these projects. We'll be seeking sponsors in the coming year to help cover additional expenses we anticipate for these projects. The charts below demonstrate what it takes to keep our nonprofit organization running and growing so that we may effectively serve our community.

EXPENSES: \$85,110



The go-to educational center for regenerative agriculture practices and sustainable living for the community.

INCOME: \$1111,902



For information regarding our financial disclosure, please contact us at info@fremontleaf.org or write to us at the following address.



LEAF

LOCAL ECOLOGY AND AGRICULTURE FREMONT

PO BOX 2816

FREMONT, CA 94536